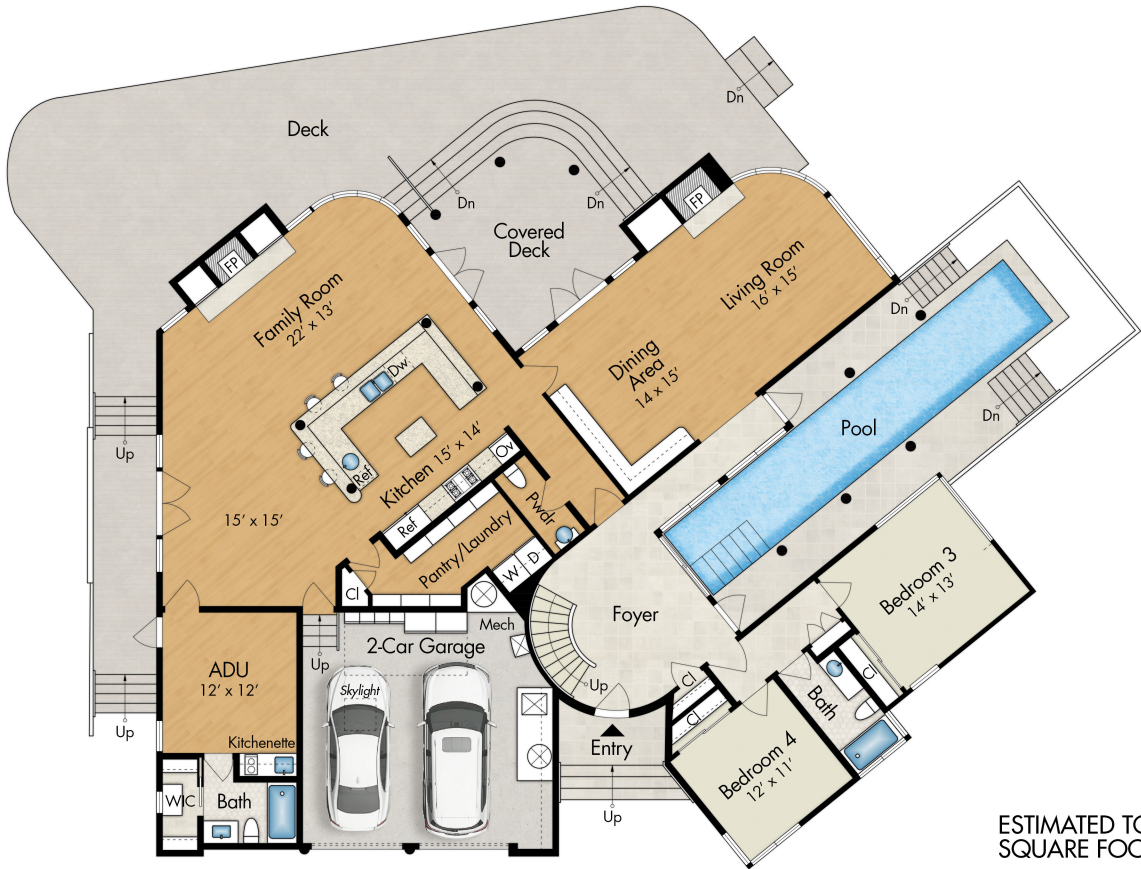


30 HERON DRIVE
MILL VALLEY, CA 94941

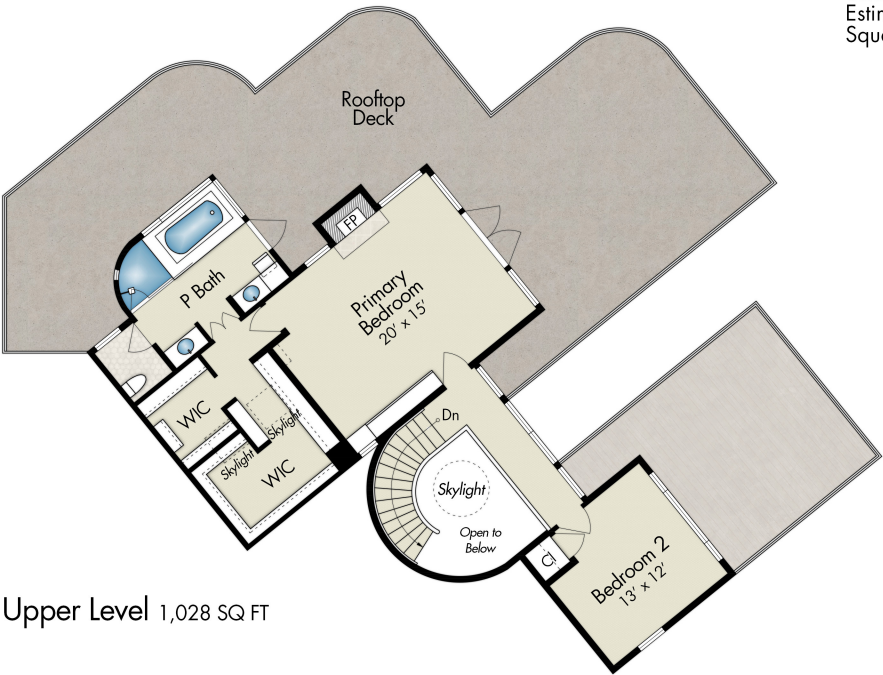


Main Level 2,610 SQ FT
Plus Garage: 476 SQ FT

ESTIMATED TOTAL FINISHED
SQUARE FOOTAGE: 3,638 SQ FT

Above grade: 3,638 SQ FT
Below grade: N/A
Plus Garage: 476 SQ FT

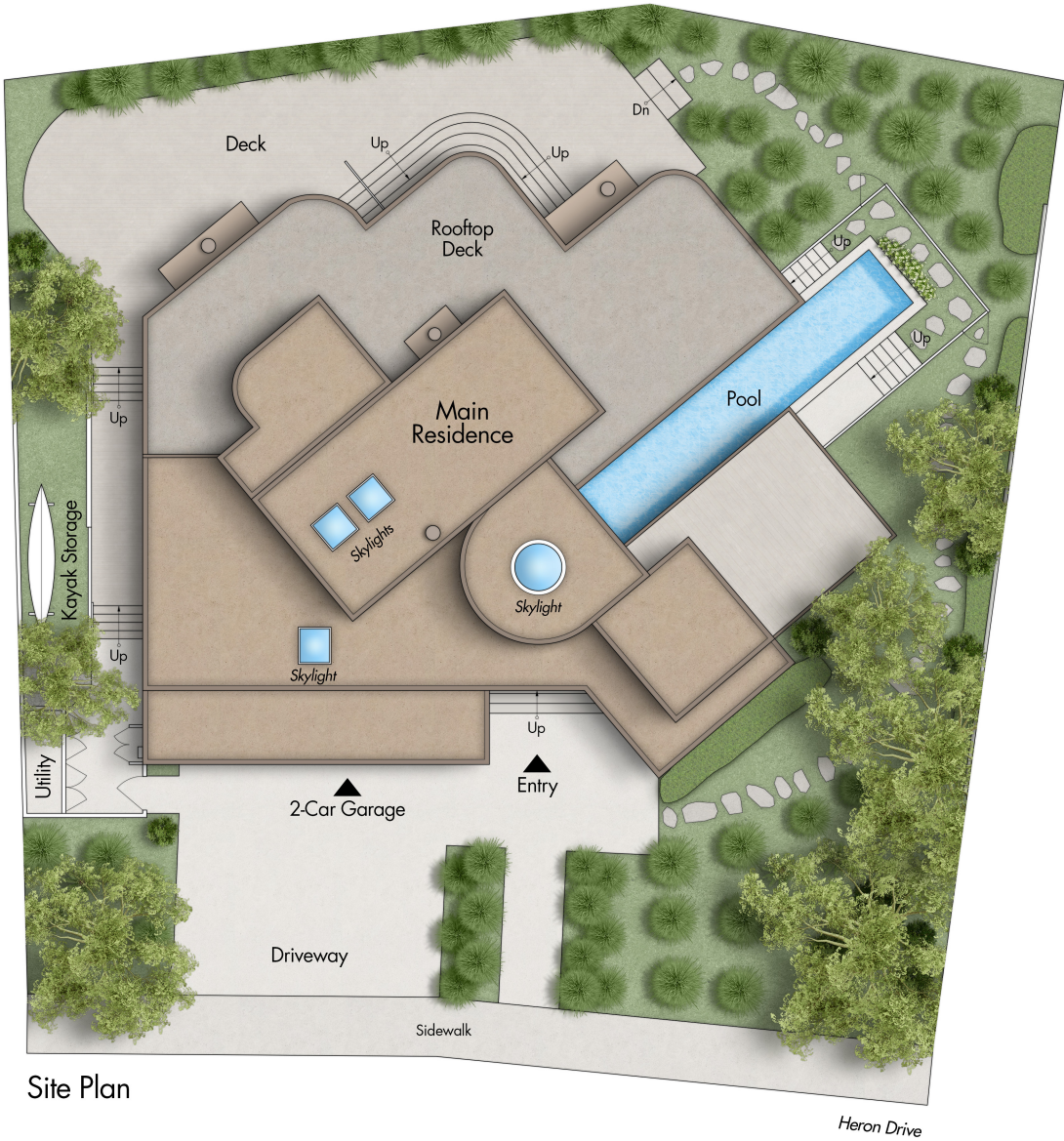
Calculated per ANSI Standard Z765-2003
Estimated Total Finished and Unfinished
Square Footage: 4,114 SQ FT



Upper Level 1,028 SQ FT



30 HERON DRIVE
MILL VALLEY, CA 94941



Site Plan



The measurements provided herein, though highly accurate are approximate and should be independently verified.